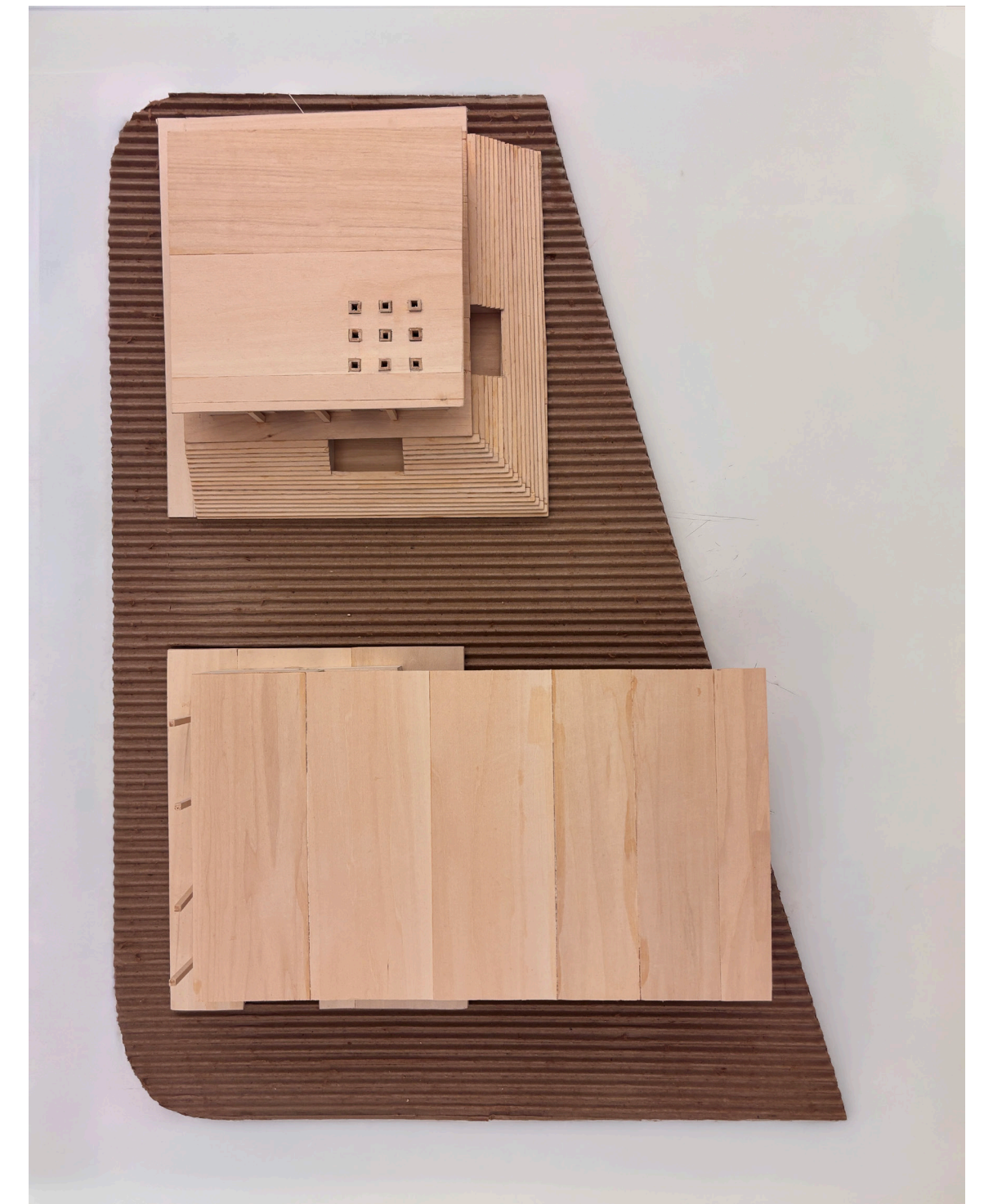
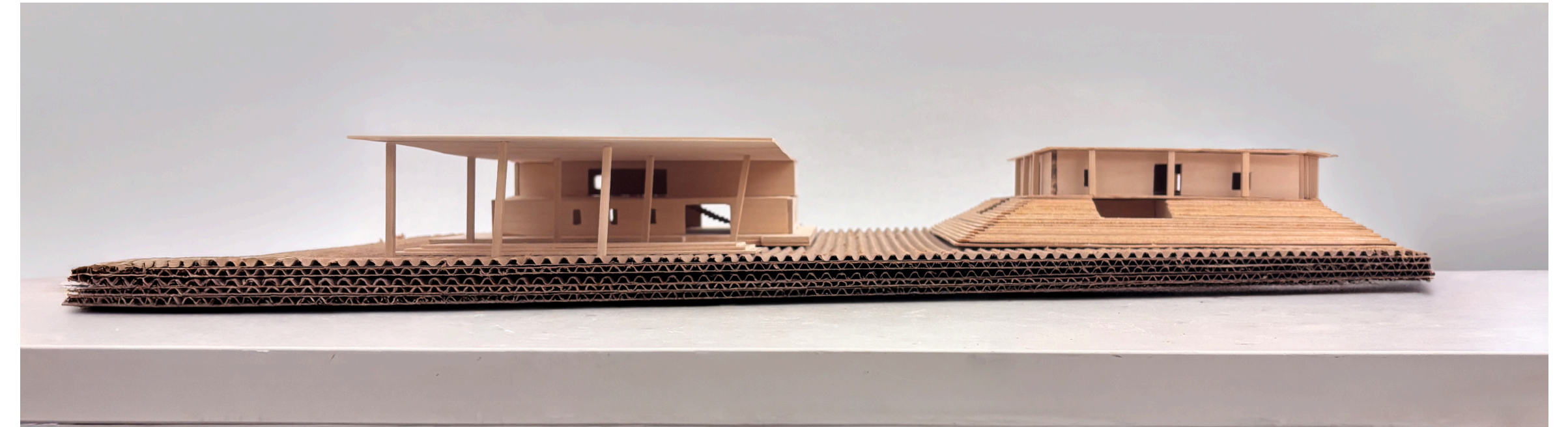
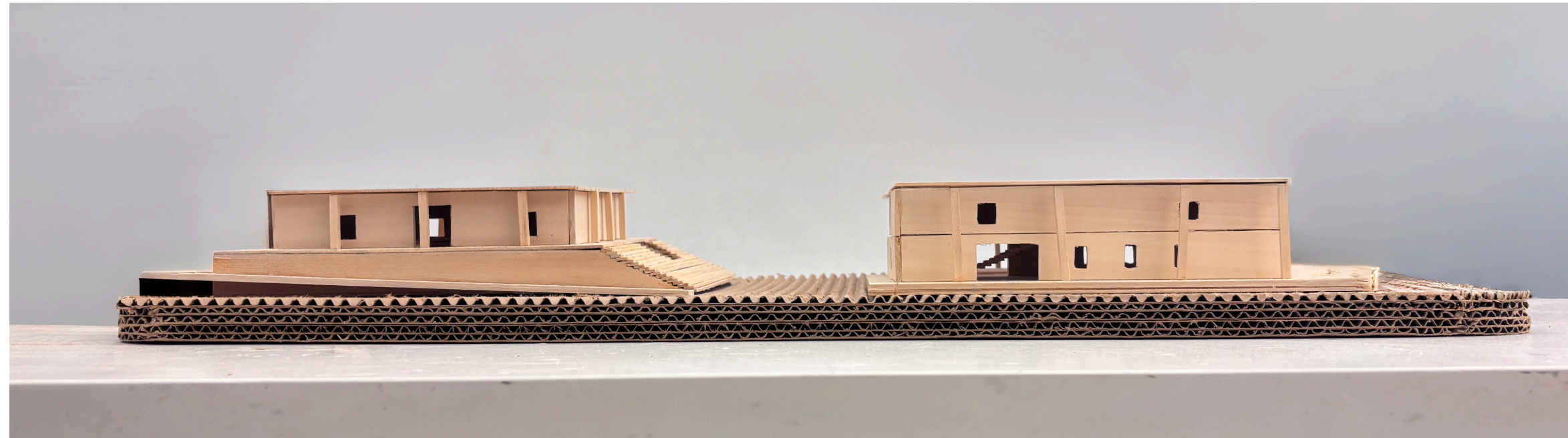


# Final Project - Arc 108 Studio

Community Resource Center - Syracuse, NY



2026 Spring Semester



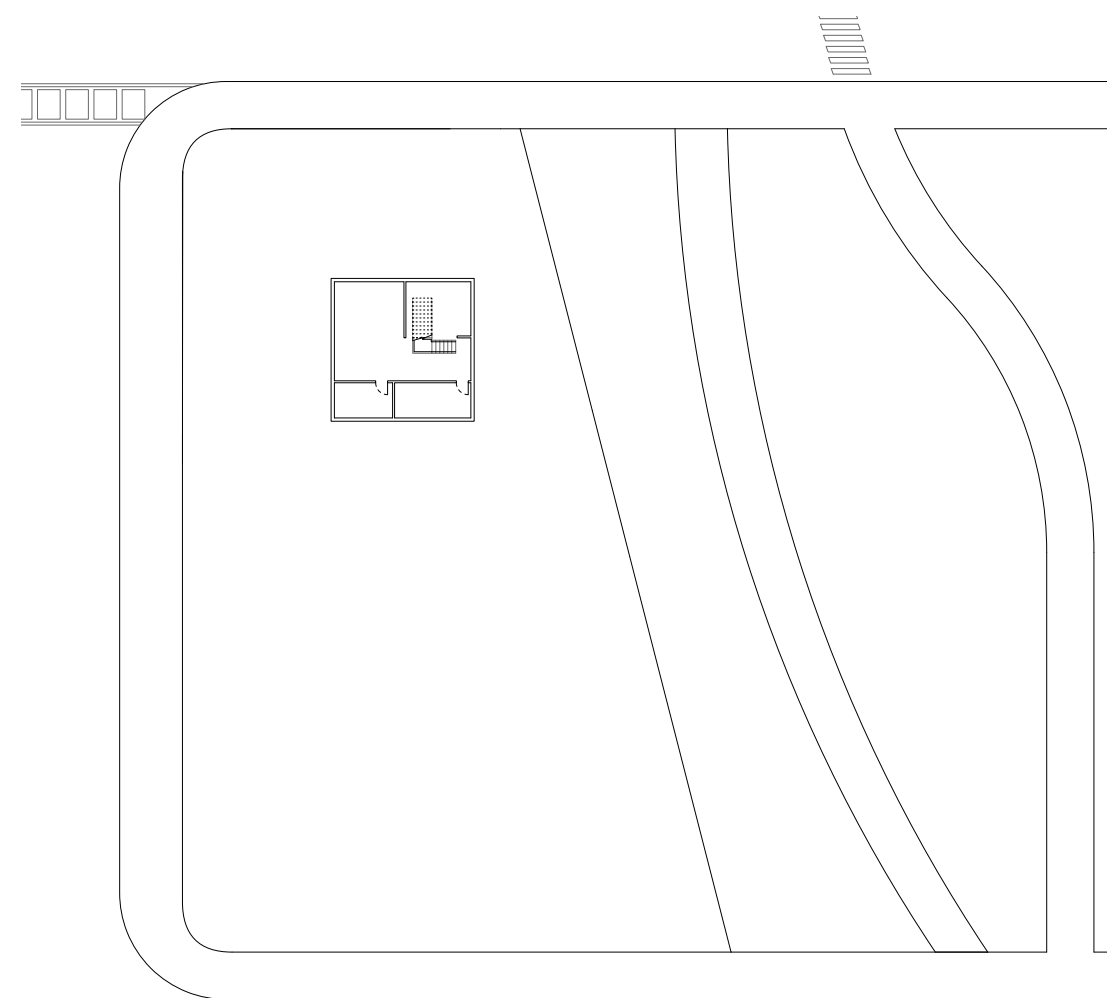
“A Civic Assembly Plaza”  
Instructor: Mariah Smith

Project Brief:

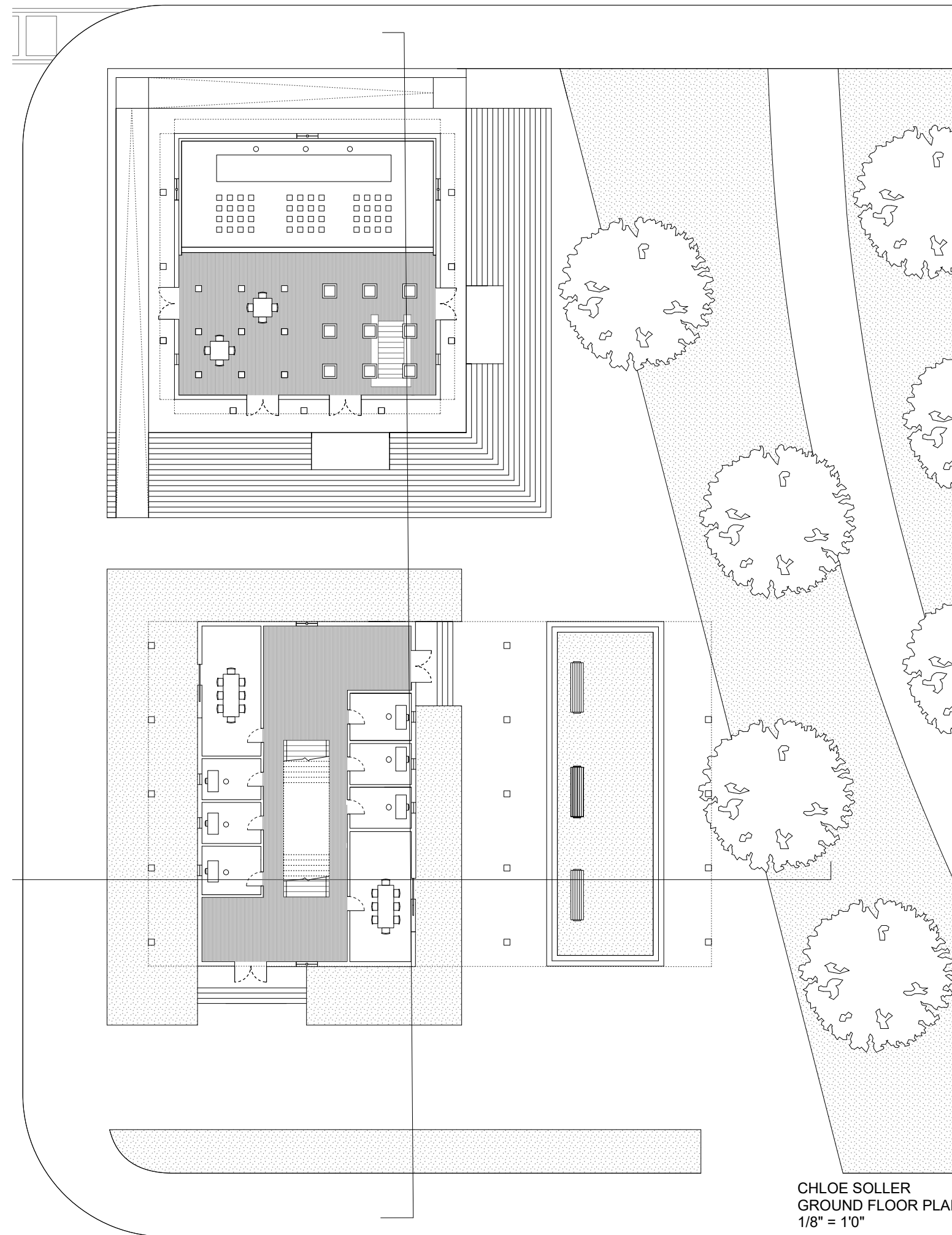
This project explores civic architecture as an active system that guides movement and shapes public experience. Derived from an analysis of circulation and visual cues, the design organizes a plaza through a structured spatial framework. Columns and vertical elements are used to direct flow, frame views, and create an immersive sequence of spaces, shifting civic architecture from static form to dynamic interaction.

# Arc 108 - Final project Digital Drawings

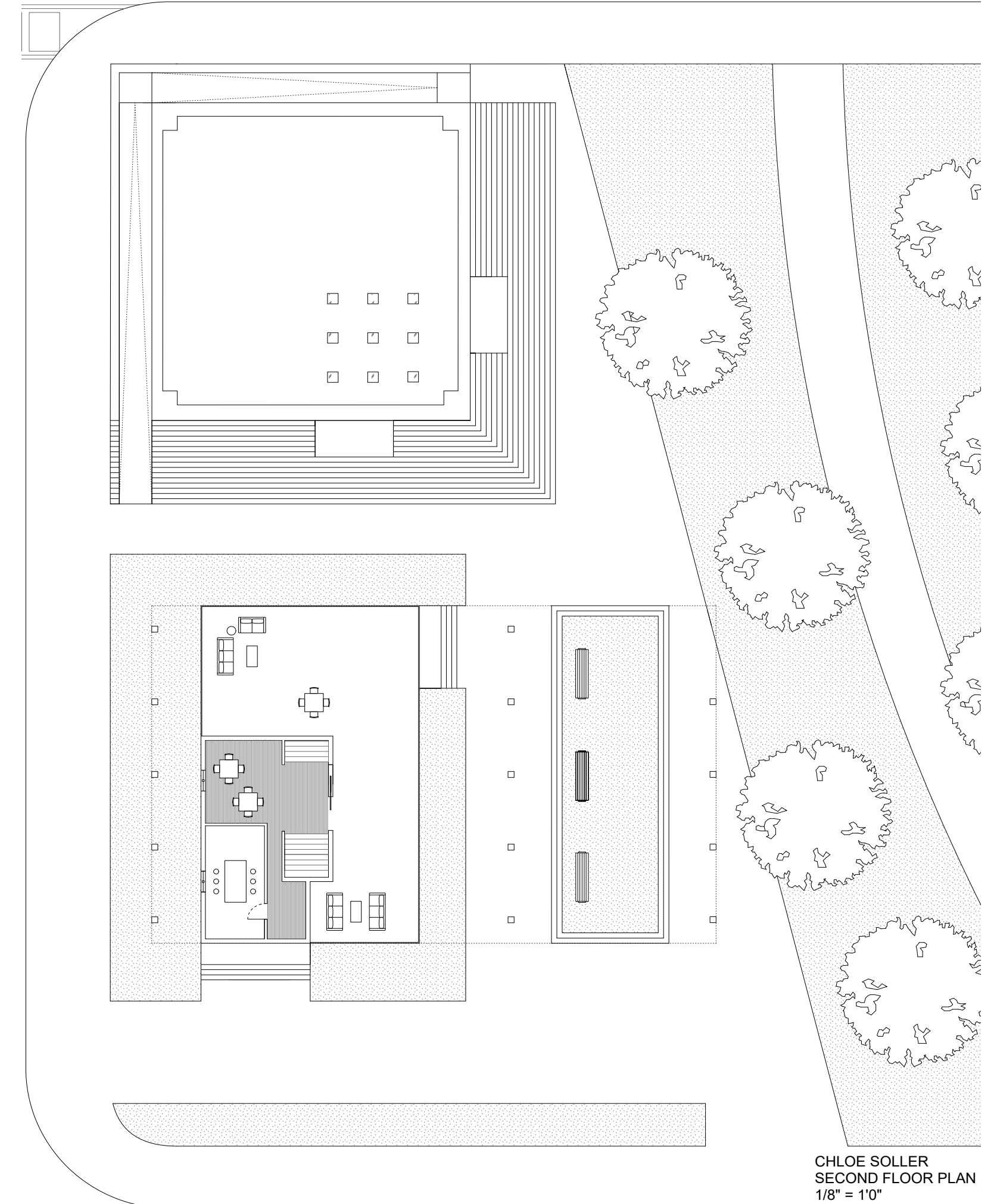
- Floorplan(s)
- Section(s)
- Elevation(s)
- Diagram(s)
  - Circulation Oblique Diagram
  - Unrolled Diagram
  - Symmetry Diagram



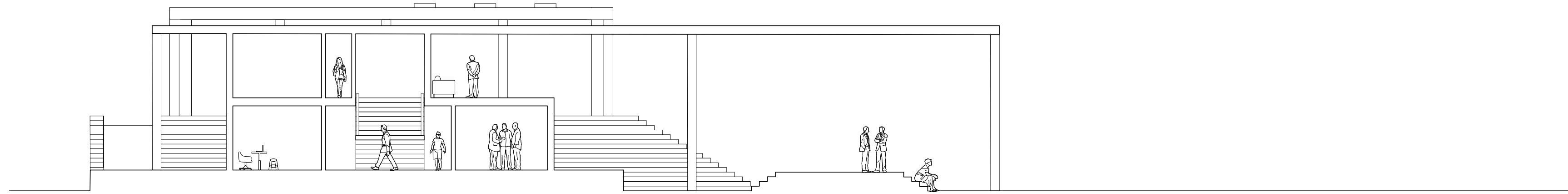
CHLOE SOLLER  
BASEMENT PLAN  
1/16" = 1'0"



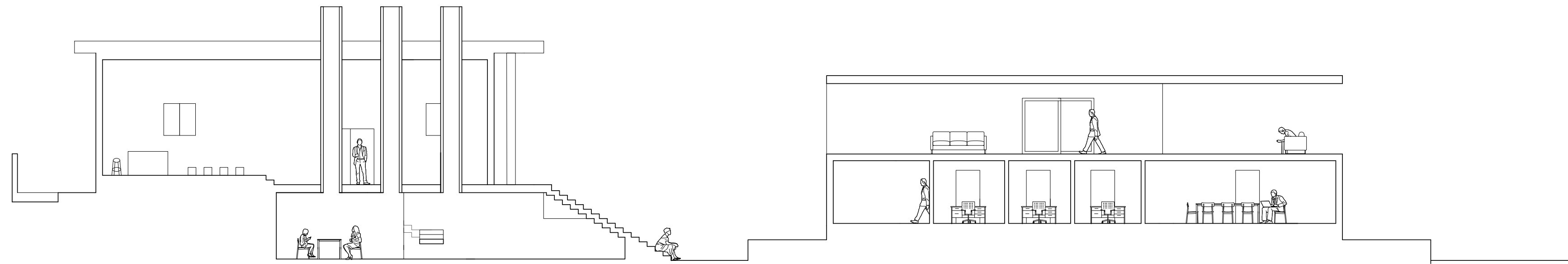
CHLOE SOLLER  
GROUND FLOOR PLAN  
1/8" = 1'0"



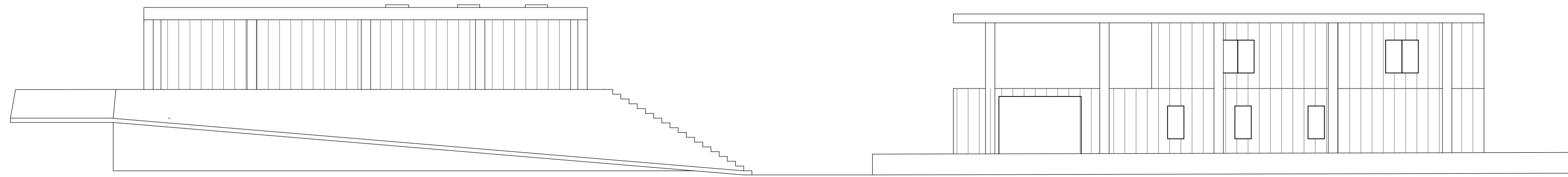
CHLOE SOLLER  
SECOND FLOOR PLAN  
1/8" = 1'0"



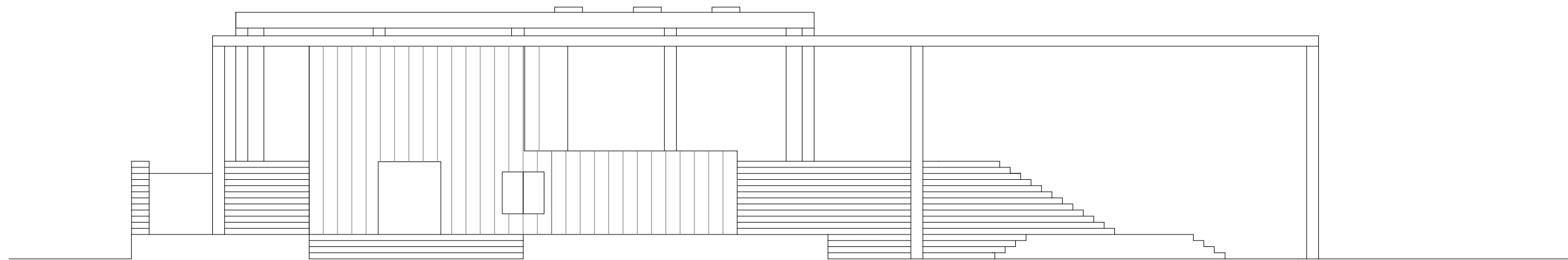
SECTION A



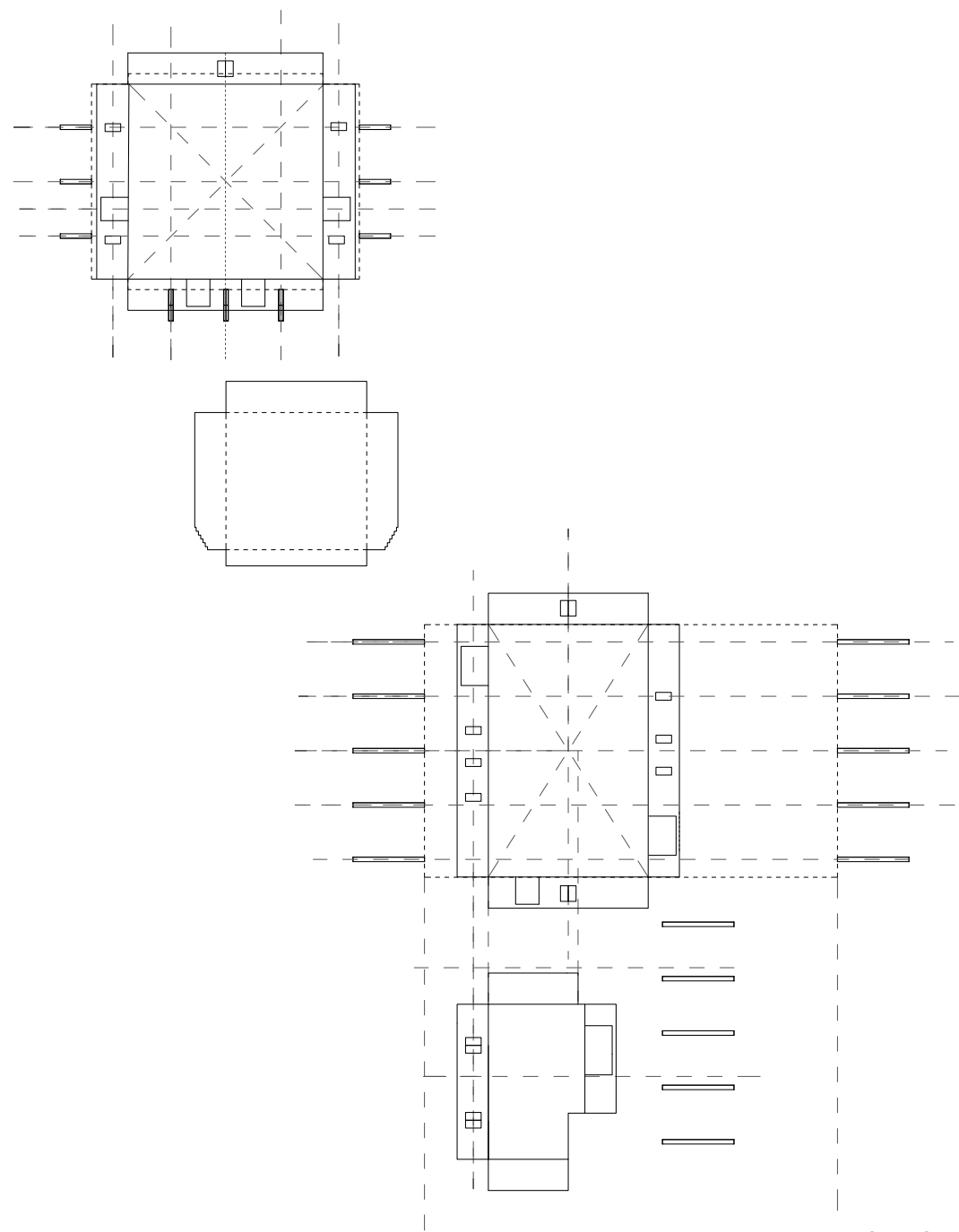
SECTION B



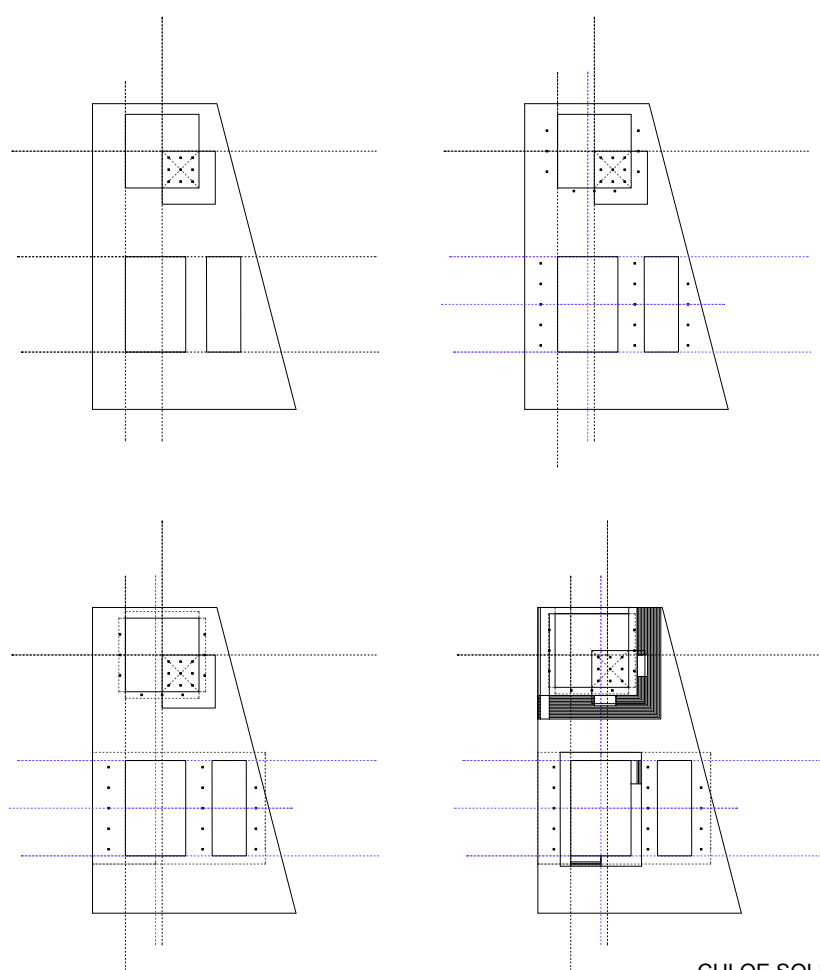
ELEVATION A



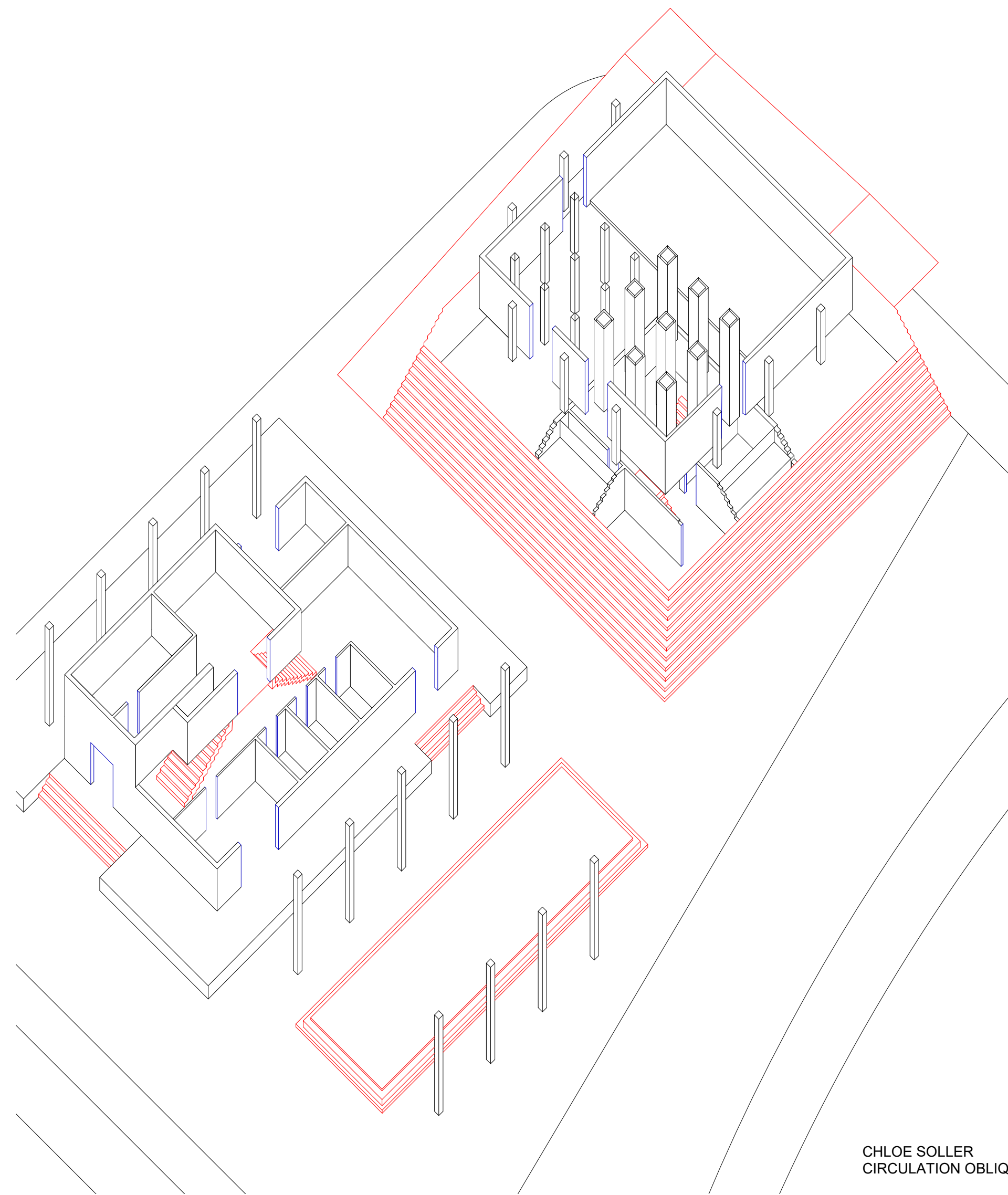
ELEVATION B



CHLOE SOLLER  
UNROLLED DIAGRAM



CHLOE SOLLER  
SYMMETRY DIAGRAMS



CHLOE SOLLER  
CIRCULATION OBLIQU